



The EPA Environmental Response Laboratory Network (ERLN)

FY'09

Field and Analytical Services

Teaming Advisory Committee Meeting

Terry Smith, Office Emergency Management (OEM)



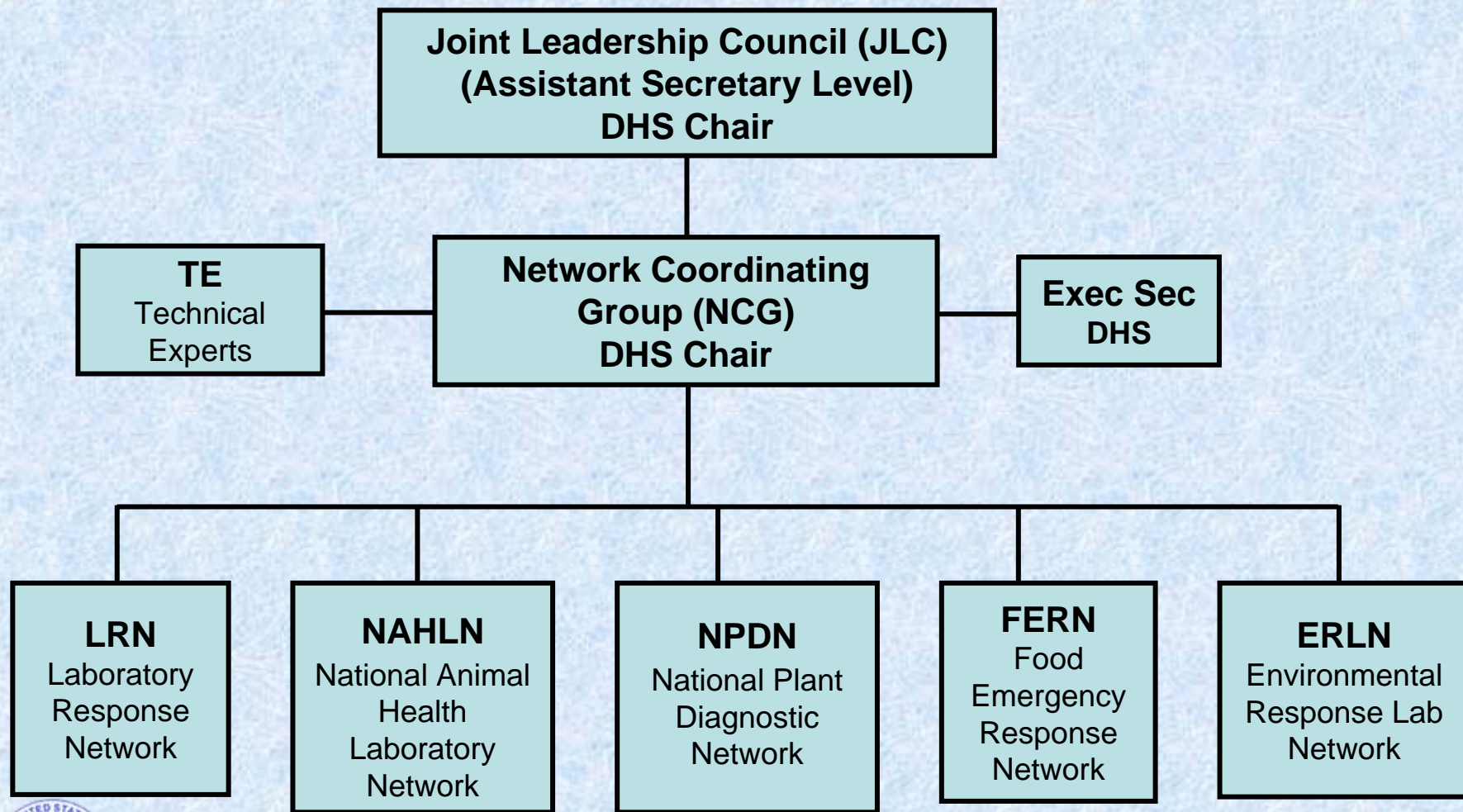
What is the ERLN?



- ◆ **A comprehensive all-hazards /all-environmental media laboratory network to address preparedness, response, remediation, and recovery resulting from acts of terrorism or other emergencies**
- ◆ **Genesis: HSPDs 5, 7, 8, 9, 10, 22**
- ◆ **Focus is TIC, CWA, Rad, and Bio***



ICLN Organizational Structure



How Does the ERLN Work?



- ◆ **Managed through Homeland Security Laboratory Response Center (HSLRC), OEM, OSWER**
- ◆ **Designed to address analytical needs of responders during the initial response through recovery phases of an event**
- ◆ **Vision is for a day-to-day support network that can seamlessly support events at any level for covered contaminants from member laboratories of known quality**
- ◆ **Includes coordination of all other infrastructure demands of ICLN RFA designations (NHSRC, ORIA, OW, NEIC)**



EPA's Environmental Laboratory Response Program Status



◆ The Environmental Laboratory Response Program

- Phased approach
- All 10 Regional labs are now formal members of ERLN
 - Limited analytical capabilities for toxic chemicals
 - Coordination with public and private labs within region
 - Coordination with environmental units established under Incident Command System
- Specialized Chemical Warfare laboratories (joint EPA/DHS)
 - EPA Region 1,3,6,9,10, States of Virginia and Florida



EPA's Environmental Laboratory Response Program Status



- ◆ **Phase 2 – mid 2009**
 - **Solicitation of public labs and commercial labs**
 - **Incorporation of ORIA Rad labs and OW utility labs**
 - **Incorporation of CLP labs**
 - **Incorporation of PHILIS mobile labs**

- ◆ **All must meet ERLN Membership Requirements**



ERLN Membership Criteria



- ◆ **Basic elements require:**
 - **Quality System (DW Certification, ISO 17025 or NELAP equivalent, CLP)**
 - **Agreement to use ERLN methods**
 - **Reporting requirements (EDD)**
 - **Participate in proficiency testing program**
 - **Submit to audits as appropriate**
 - **Meet lab specific health and safety requirements**
 - **Participate in Laboratory Compendium**

